



Invergordon

Facilities Description





Invergordon

In strategic partnership with Port of Cromarty Firth, who owns and operates Scotland's leading marine facility for rig or vessel projects, Semco Maritime Ltd. combines marine and engineering expertise to deliver efficient, cost effective and comprehensively managed projects.

Semco Maritime took on the Queens Dock facility in 2014 and since then multiple vessels have been upgraded in the Queens Dock. The yard in Invergordon is easy to access from the North Sea and provides upgrading, repair and newbuild services for semi-submersibles, jack-ups, platforms, offshore marine vessels and modules

The purpose-built integrated deepwater facilities include 140,000 m² of dedicated laydown area, more than 400 metres of deepwater quayside and direct supply services for rig or vessel projects.

Table of Contents

Travel Access	4
Rig / Vessel Travel Access	5
Berthing	6
Yard Services	10
Accommodation and Administration	11
Security and Safety	11

TRAVEL ACCESS

Airport

Inverness airport

- Flights to London, Amsterdam and other destinations
- The airport is located 50 kilometres from the Invergordon service base
- It takes less than 1 hour to reach the service base by train from the airport (price 10 GBP one way)
- www.hial.co.uk/inverness-airport/

Aberdeen international airport

- Flights to London, Amsterdam, Paris, Copenhagen and other destinations
- The airport is located 200 kilometres from the Invergordon service base
- It takes approximately 3 hours to drive from Aberdeen airport to Invergordon service base
- www.aberdeenairport.com

Railway

Invergordon railway station

- The Invergordon railway station is located 300 metres from the service base
- Provides connections to the Inverness railway station, which has connections throughout the UK
- It takes 4.5 hours to reach the service base by train from Aberdeen Airport (price 45 GBP one way)
- www.scotlandrailways.com/

Road Access

- Invergordon is located approximately 40 kilometres north of Inverness and 200 kilometres north-west of Aberdeen.



TRAVEL ACCESS

Access to the yard is through a sheltered channel. The pilot point is located 7 nautical miles from the yard, and it takes the rig about 4 hours to reach the yard from the pilot point.

Position F: Example of location of installation

Location A Invergordon:

144 nmi with an approximate tow time of 29 hours.

Location B Esbjerg, Denmark:

298 nmi with an approximate tow time of 60 hours.

Location C Bergen, Norway:

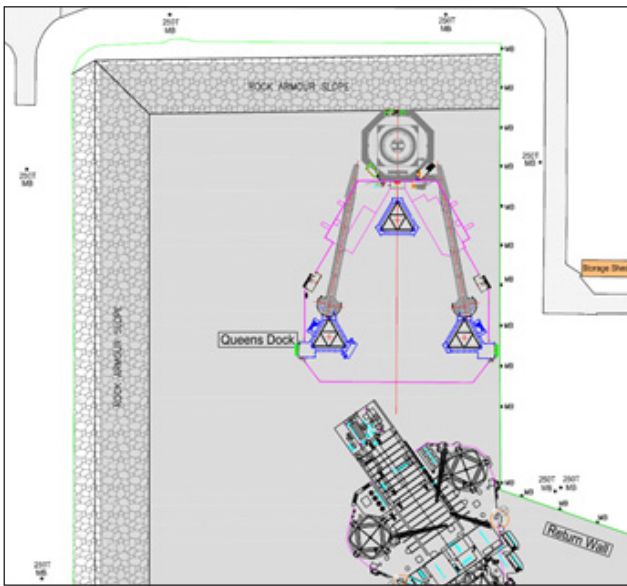
225 nmi with an approximate tow time 45 hours.



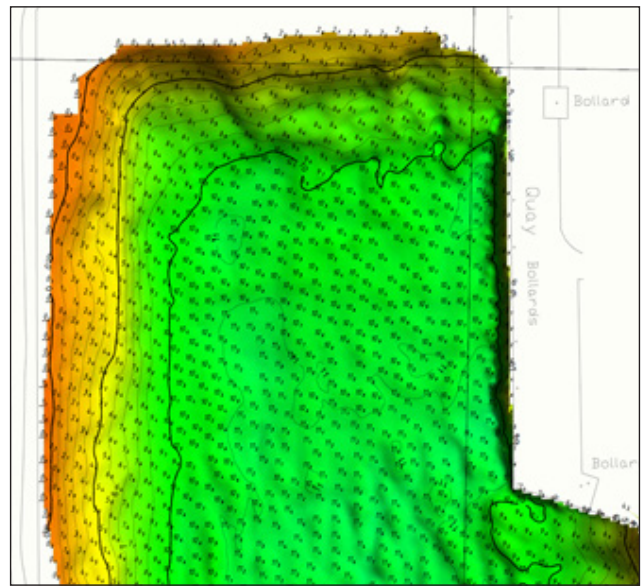
BERTHING

Queens dock

Size	150 m x 120 m
Depth	12 m
Tide variation	4 m
Mooring bollards	6 x 250 t and 11 x 50 t
Water connection	Freshwater connection at quay
Water supply	Approximately 2 bar standard camlock connection (crossovers available)
Sewage	Grey water disposal as per IMO rules. Blackwater to holding tank on quay for disposal
Power supply	Shore power provided through generators
Access tower	36 metre stair tower



Drawing of Queens Dock with possible rig location



Bathymetric map of Queens Dock



Berth 1

Quay length	50 m
Loadout	7t/m ²
Depth	Up to 5.5 m
Tide variation	4 m
Quayside height	1.5 m
Opening to quay	20 m
Mooring bollards	4x50t
Water connection	Fresh water connection standpipe with standard 2" camlock
Water supply	Approximately 2 bar
Sewage	Grey water disposal as per IMO rules. Blackwater to holding tank on quay for disposal
Power supply	Shore power provided through generators

Berth 2-4

Quay length	288 m
Loadout	20t/m ² heavy load pad
Depth	8-14.5m
Tide variation	4 m
Quayside height	1.5 m
Opening to quay	30 m
Mooring bollards	5x200t and 15x50t
Water connection	Fresh water through standard 2" camlock connection
Water supply	Approximately 2 bar
Sewage	Grey water disposal as per IMO rules. Blackwater to holding tank on quay for disposal
Power supply	Shore power provided through generators



Overview of berthing locations in Invergordon

YARD SERVICES

Waste oil handling	Local waste transfer and disposal stations within a distance of 10 km
Outdoor storage	140,000 m ²
Indoor storage	Up to 4,000 m ²
Crane capacity	Up to 1,000 t
Tug assistance	Tugs available
Stair tower	36 m free-standing stair tower
POB system	24-hour POB access through yard (ISPS), via T card or electronically at rig
Lighting	Flood lights set up in all yard areas
Compressed air	Mobile diesel-powered air compressors available
Diesel fuel	MGO bunkering available directly at berths 2 and 3. All other berths are for vehicular tankers, whereas anchorages are by fuel barges
Workshops	Workshops available through contractors
Forklifts	Forklift trucks available in all sizes
Cherry pickers	Cherry pickers available in different sizes
Working hours	Work is allowed 24/7
Hot work	Yes
Communication	Broadband and mobile connectivity
Heavy lift barge	Loading and unloading onto heavy lift barge is possible within the port limits of 38m water depth.



ACCOMMODATION AND ADMINISTRATION



Accommodation

- Private housing and other lodging nearby can be rented through Semco Maritime or local agencies.
- Hotels and B&B are found in the surrounding area as well.
- The yard offers changing rooms and a canteen (up to 100 persons).
- The parking space on site has the capacity for approximately 200 cars.
- A larger car park is accessible.

Offices

- Up to 70 permanent PAX office stations are available.
- Additional offices can be provided through our partners.
- Office facilities include meeting rooms, private offices and kitchen areas.
- Printers and copying machines can be provided at central locations according to project/client preferences.

SECURITY AND SAFETY: Safety is part of our DNA

Security

Security is maintained through the following systems:

- The yard area is fenced in.
- Outside normal working hours, authorised personnel have access to identified areas through an electronic access control system.
- An external security company appointed by Port of Cromarty Firth controls and supervises the yard.
- Project-specific control including 24-hour POB access control and electronic security access systems.

Safety

- The yard is certified according to ISPS standards
- Fire extinguishers and fire hoses are located at and around the yard
- Response time for local fire department is 15 minutes
- Response time for minor local hospital is 15 minutes
- It takes about 30 minutes to drive from the yard to the regional hospital »Raigmore« in Inverness
- In case of serious emergencies, an air ambulance (based in Inverness) can land in the immediate vicinity



Semco Maritime is certified according to:

ISO 9001 - Quality Management System

ISO 14001 - Environmental Management System

ISO 45001 - Occupational Health and Safety Management System standard

Achilles Oil and Gas Europe - Certificate of Registration

Magnet JQS - Joint Qualification System

All certificates can be forwarded upon request.



Semco Maritime Ltd

Tern Place,
Denmore Industrial Estate
Bridge of Don
Aberdeen AB23 8JX
United Kingdom

Tel. +44 1224 702211

phil@semcomaritime.com
www.semcomaritime.com

 #semcomaritime